



**Weber**<sup>®</sup>  
BÜRSTENSYSTEME

**Pavement cleaning  
and landscaping**





## Down to earth

We have never lost touch and stayed on the ground - because we are deeply familiar with all kinds of floors. The development work of Weber Bürstensysteme is closely connected with mode road building and with the first road sweepers as long as 120 years ago. It is this tradition and experience which our customers benefit from day in and day out.

Established in 1894, Weber Bürstensysteme today is a dynamic company with about 120 employees that is family-managed in the fourth generation. We use our two factories in Bad Camberg and Selters (Hesse) as well as our office in Schmölln (Thuringia) to develop, manufacture and market high-quality brushes which meet the demands of the most challenging applications while achieving OEM quality. Established machine manufacturers have been relying on our systems as original equipment for many years.

From street cleaning to industrial floor care, from concrete block production to livestock care, from snow removal to gardening and landscaping – our deeply rooted comprehension of our customers' applications helps us to create a multitude of customized solutions. At the end of the day any vehicle and any machine is only as good as the brush it uses.

## Development

# Focusing on the essentials

Fine or hard bristles, steel, plastic, or individual combinations, three, four or more rows, straight or wave-form rings – we are putting a lot of effort and know-how into the development of our Weber brushes to make sure they deliver optimum performance. Supported by state-of-the-art CAD-/CAM technology, our engineers are working on new mixtures, optimizing production processes and facilities. The result of their work is brushes that simply make the difference.



## Raw materials

# The ideal mixture

High quality raw materials are the basis for the quality and effectiveness of our brushes. For that reason we use certified suppliers only. While this is obligatory for us, the right recipe and preparation are “freestyle”. We make sure that selection, combination and processing of materials are precisely adapted to the application and to the various requirements.



**Plastic bristles**



**Wire bristles**



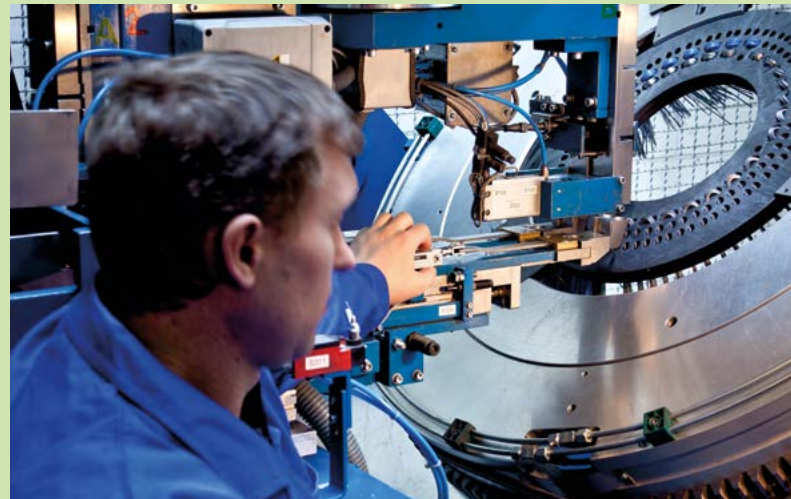
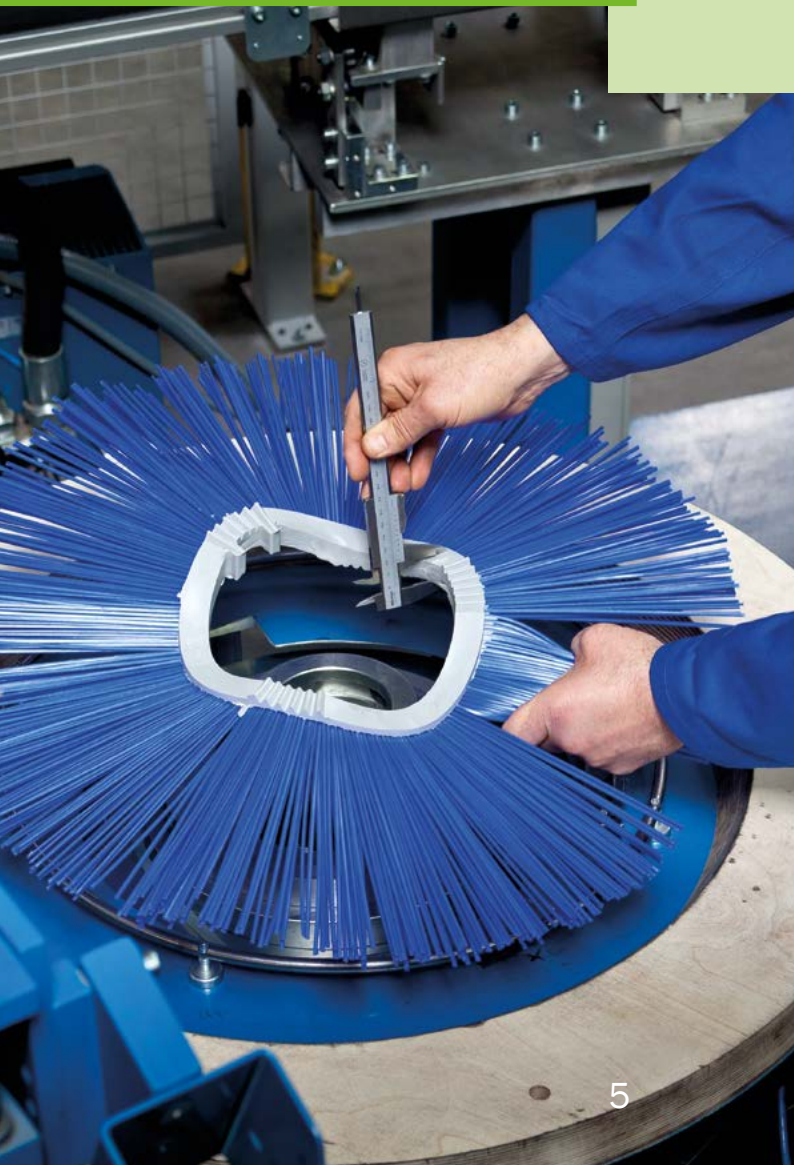
**Brush body**



## Production

# Drilling. Filling. Pinning.

We focus on vertical integration. This is supported by continuous investment in our production facilities. The latest example is a plant for the production of brush bodies. Our production facilities in Bad Camberg and Schmöln ensure a constantly high manufacturing quality for the production of pinning and filling machines for brush rollers and circular brushes, for brush ring manufacturing plants, or for our dedicated machine construction.



## Applications

# Small brush rollers

Small brush rollers support the maneuverability of single-axis machines. In addition to the multitude of universal brush rollers, we also offer special versions for each application, precisely adapted to the relevant requirement and to the machine.



### Benefits

- Variable bristle types (spiral-shaped, fully equipped, or V-shaped)
- Customized material mixtures
- Lengths: up to 500 mm
- Sweep diameter: up to 500 mm

# Medium-size brush rollers

We offer a broad range of proven standard brushes in different versions for all common lawn tractors as well as for tractor-mounted machinery. From fine plastic bristles to hard, wire enforced bristles – our brushes are ideally adapted to the surface and to the machines.



### Benefits

- Mixed bristle types possible
- Variable material mixture
- Lengths: up to 1.000 mm
- Sweeping diameter: up to 600 mm
- Special versions: e. g. particularly fine and smooth bristles to clean historical cobblestones

## Applications

# Large brush rollers

Front-mounted brush rollers mainly transport the sweepings to the behind containers using the “throw principle”. They are ideally suited for the “compact class” of professional equipment carriers. To achieve optimum sweeping performance, we carefully adapt the arrangement and the strengths of the bristles to each machine type.



### Benefits

- Variable bristle types (spiral-shaped, fully equipped, or V-shaped)
- Customized material mixtures
- Lengths: up to 1.100 mm
- Sweeping diameter: up to 700 mm

# Side/circular brushes

Weber-side brushes are robust and designed for extreme loads. They are usually equipped with flat wire bristles which are able to remove even persistent dirt and encrustations in gutters. Depending on the application, plastic bristles or plastic/wire combinations are also available.



### Benefits

- Mixed bristle types possible
- Variable material mixture
- Special versions:
  - e. g. particularly fine and smooth bristles to clean historical cobblestones

## Applications

# Brush rings

Brush rings are characterized by a high bristle density, providing long service life for large areas. Based on our **WaveLine** (wave-shaped), **ClassicLine** (straight bristles) or **SnowLine** product lines we offer customized solutions for any application and special versions such as **Wheel**.



### Benefits

- Variable sweeping widths
- Different designs for high sweeping efficiency
- **WaveLine** with patented **CrownLock®-System** – stable connection, no displacement
- External diameter: up to 1250 mm

# Brush strips

Used to take up the cut grass or to distribute sand – we offer a multitude of brush strips for the effective and gentle treatment of demanding golf, sport, or synthetic turf surfaces. We make sure that the length, bristle type or material mixture is precisely adapted to the requirements and to the attached devices.



### Benefits

- Customized material mixtures
- Length: up to 1.800 mm (one piece)



**Applications**

# QUICKEHR sweeper bars

Almost unlimited number of product versions due to individual bristles and colours. Different profiles and working widths are available – for (almost) all forklifts, agricultural and construction machines.



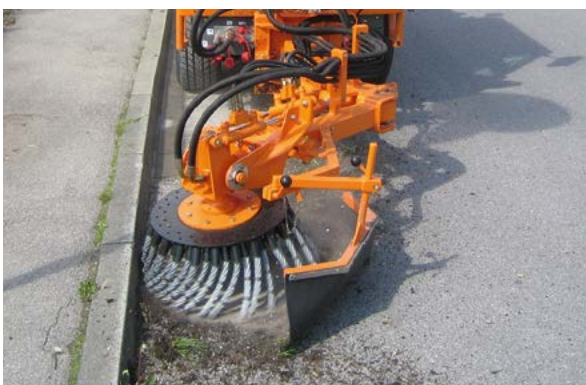
**Benefits**

- High bristle density
- Top-quality polypropylene
- Robust plastic body
- Temperature resistant
- Universal applications – for stones, gravel, sand, spread, chipping, ...



# Weed removal brushes

Compared to all other technologies, brushes have become the preferred way of non-herbicidal weed removal. From hard flat-wire clusters, spliced steel wire clusters with a high pulling force, or plastic clusters for gentle weed removal – we have suitable systems for all applications.



**Benefits**

- Individually customized systems (flat wire, steel rope, plastic)
- Special brushes for sweepers
- Bristles can be re-fitted – steel plate with replaceable bristles

# Weed removal brushes and accessories for garden trimmers

Whenever weed removal using special machines reaches its limits, e. g. on traffic refuges, special tools for garden trimmers can be used to efficiently and quickly remove weed.



**Benefits**

- More aggressive than any wire head
- Fast replacement of weed removal brush

**Logistics**

# Everything within reach!

Downtimes cause financial losses. To make sure that you remain flexible, we have further upgraded our storage capacities in spring 2012. In Bad Camberg and in our new logistics center in Selters (Hesse), we have all common types of brushes and accessories readily available in our almost 4,000 m<sup>2</sup> storage facility. Just drop us a call and we will deliver the required standard article within 24 hours.



**Customer Service**

# Mobile know-how!

Goal achieved? What may look like a completed order for us is only one single step. Delivery and qualified on-site service are important modules of our service program. We have our own vehicles for free warehouse delivery. And on top of that, our trained service drivers are the extended arm of our sales organization, supporting you on all technical questions that you may have.





## Clean solutions for industrial, municipal and agricultural applications

For street cleaning, snow removal, pavement cleaning, livestock care or concrete block production, Weber Bürstensysteme offers a broad range of technical brushes. Our proven standard solutions are complemented by customized systems for all cleaning applications that we develop in cooperation with machine and vehicle manufacturers.



**Street cleaning**



**Concrete block production**



**Livestock care**



**Industrial and floor cleaning**



**Snow removal at airports**



**Pavement cleaning and landscaping**

## **Weber Bürstensysteme GmbH**

### **Administration, sales, development, production and customer service**

Kleinmühle an der B8

65520 Bad Camberg

T +49 (0) 6434 91 25 - 0

F +49 (0) 6434 91 25 - 42

### **Schmölln office**

#### **Sales and production**

Am Jägerfließ 4

04626 Schmölln-Nitzschka

T +49 (0) 34491 635 - 93

F +49 (0) 34491 635 - 94

