



Weber[®]
BRUSH SYSTEMS

Sweeping rollers



Drilling. Filling. Pinning.

Since we rely on vertical integration, we continuously invest in our production facilities. One example is our brush body production machine.

From filling and pinning machines for sweeping rollers and circular brushes to equipment for the manufacture of brush rings and our own mechanical engineering department, we are able to ensure a constantly high level of production quality.



It's all about the mix

Weber has the right sweeping roller for almost every application and for all common front-mounted sweepers and self-collecting machines.

Product properties such as sweeping performance, temperature resistance, spinning and transport effect, smooth operation or service life are influenced by the material mix and composition.

For more information, please refer to pages 18 and 19.

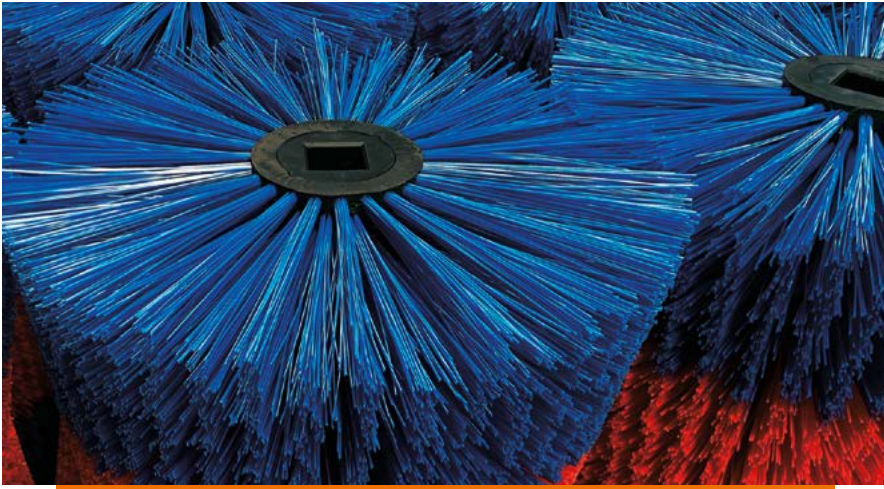


Application areas

Our in-depth knowledge of customer requirements helps us to create versatile solutions exactly adapted to each individual application. Especially in the municipal sector for street and pavement cleaning but also in landscaping, Weber sweeping rollers prove their worth every day in garden and park maintenance, in winter service for snow removal and at airports.



Sweeping rollers



For any application and for all common front-mounted sweepers and self-collecting machines.

Product range

- > Bristle arrangement: straight, spiral-shaped, fully covered
- > Bristle material: plastic, plastic/crimped wire, plastic/flat wire
- > Sweeping width: up to 1,100 mm one-piece
- > Sweeping diameter: up to 700 mm
- > Colors: on request

Effective

Effective transportation of dirt by spiral-shaped bristle arrangement. The special rotational motion ensures smooth operation and effective transportation of dirt to the vacuum nozzle or to the dirt collector.

Features

- > Smooth operation
- > Effective transportation



Universal

Effective and thorough removal of any kind of soiling, from respirable dust to building site rubble.

Features

- > Universal application
- > High bristle density

Powerful

A mixture of crimped wire and plastic bristles easily removes persistent and crusted soiling such as mud. Ideally suited for building site cleaning.

Features

- > Crimped wire/plastic mixture



Aggressive

A high bristle density of high quality plastic combined with robust crimped wire provides optimum cleaning performance, e.g. in case of coarse dirt (split etc.).

Features

- > High bristle density



Persistent

High performance nylon bristles ensure extended operating life.

Features

- > Extended operating life
- > Low wear



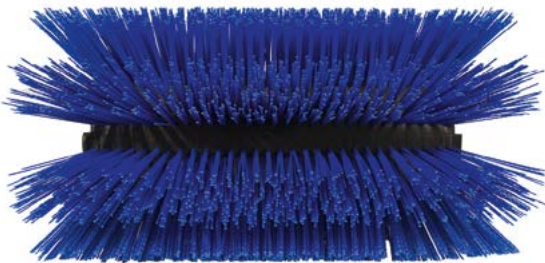
**“Any brush
is only as good
as its bristles”**



Bristle types

The arrangement, material mixture and thickness of bristles all have a major impact on the sweeping efficiency and on the operating life. High-quality raw materials are the basis for quality and performance of our

brushes. To achieve optimum sweeping performance, we are adapting the selection, the combination and the processing of materials to each individual machine type and to each application.



Straight

Universal application
> High spinning effect

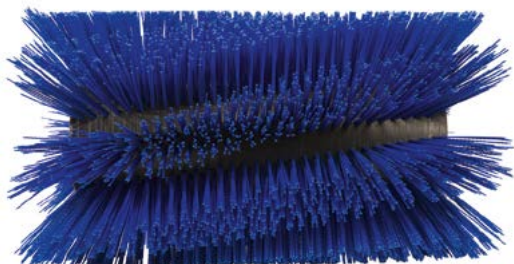


SnowBlow*

Special design
> Utmost sweeping performance

**Very high
spinning
effect!**

* proprietary design



Spiral-shaped

Highly smooth operation and
high transport effect in one direction



Fully covered

Effective and thorough removal
of dirt



Wire bristles increase the aggressiveness and sweeping performance!

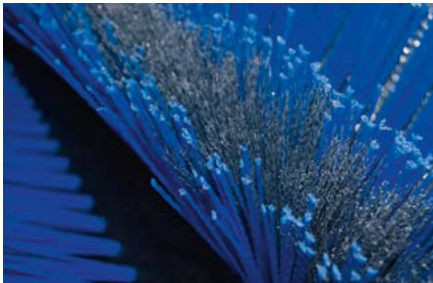
The ideal mixture

Weber sweeping rollers are fitted with bristles according to customer demand. General principle: a high amount of wire increases the aggressiveness and this

the sweeping efficiency. The risk of wire break is lower in the linear arrangement than it is in the bundle mixture.

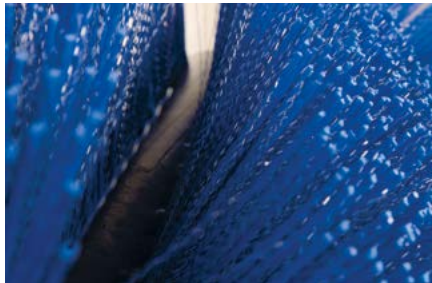
Linear mixture

made of wire and plastic



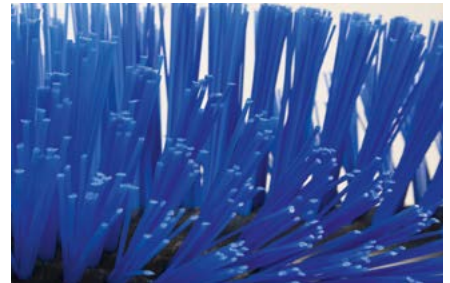
Bundle mixture

made of wire and plastic



Bundles

made of robust plastic



Types of drive and shapes

We are characterized by a high level of vertical integration. We manufacture our brush bodies with modern production systems and a large variety of shapes in various dimensions for the adaptation of all common brush drives.



Weber Brush Systems GmbH

Administration, sales, development, production and customer service

Kleinmühle an der B8

65520 Bad Camberg

T +49 (0) 6434 91 25 - 0

F +49 (0) 6434 91 25 - 42

Schmölln office

Sales and production

Am Jägerfließ 4

04626 Schmölln-Nitzschka

T +49 (0) 34491 635 - 93

F +49 (0) 34491 635 - 94

